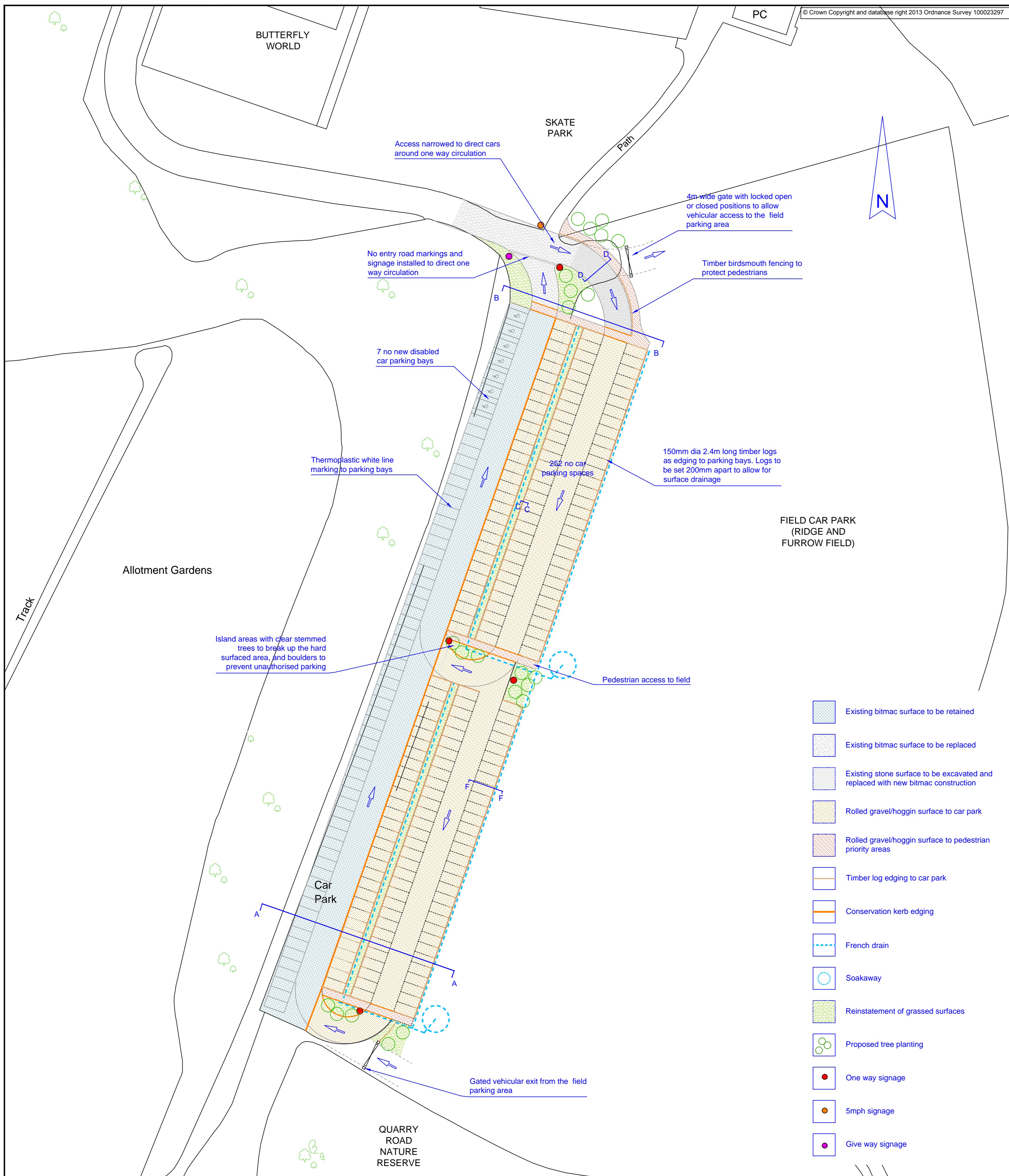
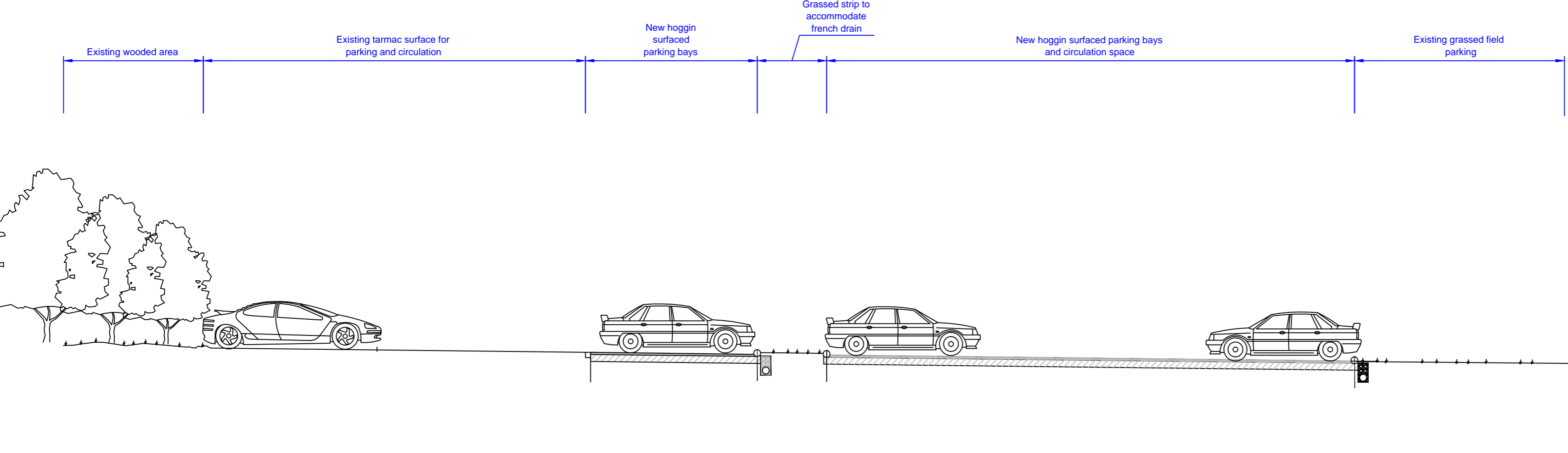


NOTES

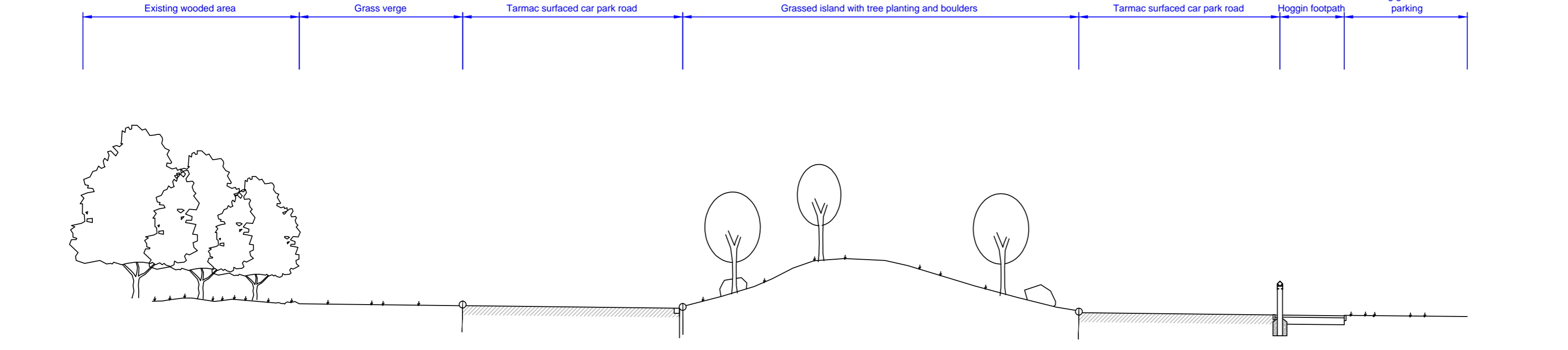


- Existing bitmac surface to be retained
- Existing bitmac surface to be replaced
- Existing stone surface to be excavated and replaced with new bitmac construction
- Rolled gravel/hoggin surface to car park
- Rolled gravel/hoggin surface to pedestrian priority areas
- Timber log edging to car park
- Conservation kerb edging
- French drain
- Soakaway
- Reinstatement of grassed surfaces
- Proposed tree planting
- One way signage
- 5mph signage
- Give way signage

Section A-A through South Field Car Park Extension  
Scale 1:100



Section B-B through Entrance to South Field Car Park Extension  
Scale 1:100



| Rev | Description | Dn | Chk | Date |
|-----|-------------|----|-----|------|
|     |             |    |     |      |

Drawing Status: PRELIMINARY  APPROVAL   
 INFORMATION  TENDER  CONSTRUCTION



Development & Neighbourhood Services  
 Head of Technical Services Richard McGuckin B.Eng., C.Eng., F.I.C.E.  
 P.O.Box 229, Kingsway House, West Precinct, Billingham, TS23 2YL  
 Telephone (01642) 393939. E-mail: technicalservices@stockton.gov.uk

Project: PRESTON PARK MASTERPLAN

Content: SOUTH FIELD CAR PARK GENERAL ARRANGEMENT

|                              |                       |
|------------------------------|-----------------------|
| Date: Dec 2014               | Dwg No: TS10287-00-03 |
| Drawn: SW                    | Checked: PE           |
| Scales: @ A1 1:500 and 1:100 |                       |
|                              | Rev                   |